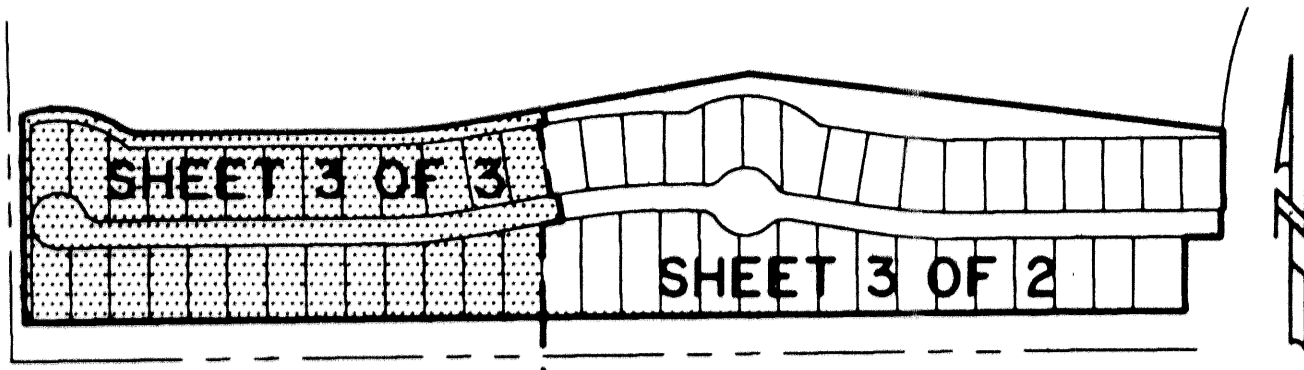


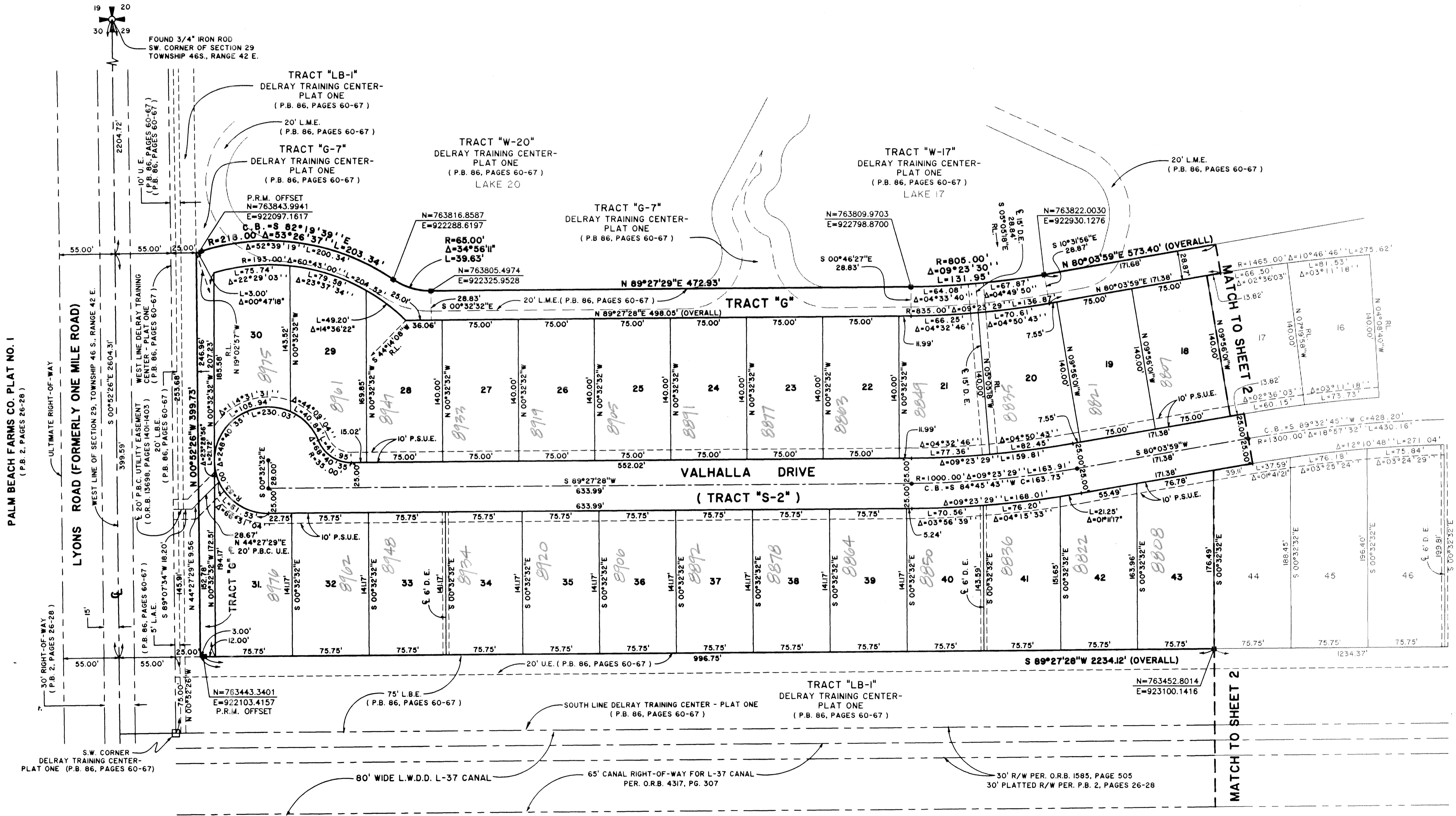
DELRAY TRAINING CENTER P.U.D. - PARCEL J

A PLANNED UNIT DEVELOPMENT
BEING A REPLAT OF TRACT "FD-4", DELRAY TRAINING CENTER - PLAT ONE, AS RECORDED IN
PLAT BOOK 86, PAGES 60 THROUGH 67, PUBLIC RECORDS OF PALM BEACH COUNTY,
FLORIDA, LYING IN SECTION 29, TOWNSHIP 46 SOUTH,
RANGE 42 EAST, PALM BEACH COUNTY, FLORIDA.

SHEET 3 OF 3

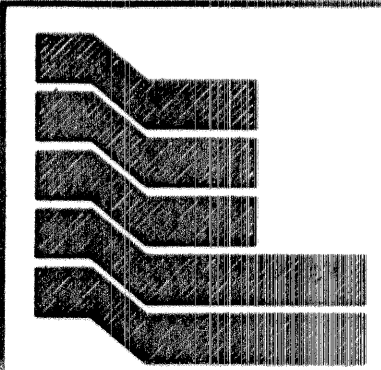
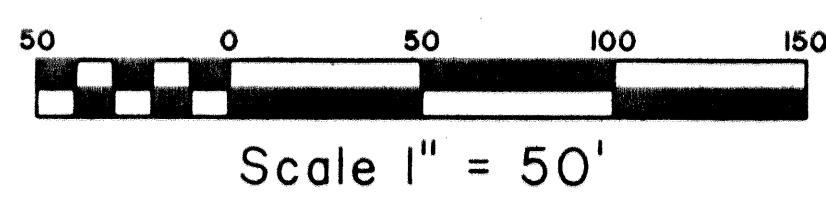


STATE OF FLORIDA 88
COUNTY OF PALM BEACH
THIS PLAT WAS FILED FOR RECORD AT _____
M. THIS _____ DAY OF _____ 2002
AND DULY RECORDED IN PLAT BOOK NO. _____
ON PAGE _____
DOROTHY H. WILKEN,
CLERK OF THE CIRCUIT COURT
BY _____ D.C.



COORDINATE NOTE:
STATE PLANE COORDINATES SHOWN ARE GRID DATUM, NAD 83 1990
ADJUSTMENT, FLORIDA EAST ZONE, COORDINATE SYSTEM 1983 STATE
PLANE, TRANSVERSE MERCATOR PROJECTION
LINEAR UNIT = US SURVEY FEET
ALL DISTANCES ARE GROUND
SCALE FACTOR = 1.000020427035
GROUND DISTANCE X SCALE FACTOR = GRID DISTANCE
BEARINGS AS SHOWN HERON ARE GRID DATUM, NAD 83 1990
ADJUSTMENT, FLORIDA EAST ZONE.

PALM BEACH FARMS CO. PLAT NO. 1
(P.B. 2, PAGES 26-28)



Landmark Surveying & Mapping Inc.
1850 Forest Hill Boulevard
Ph. (561) 433-5405 Suite 100 W.P.B. Florida
LB # 4396

DELRAY TRAINING CENTER P.U.D.-PARCEL J